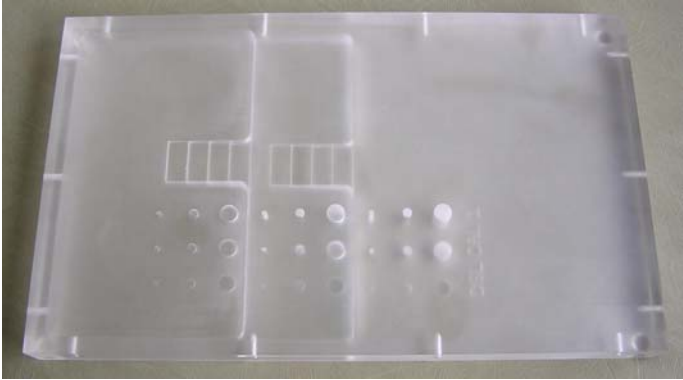
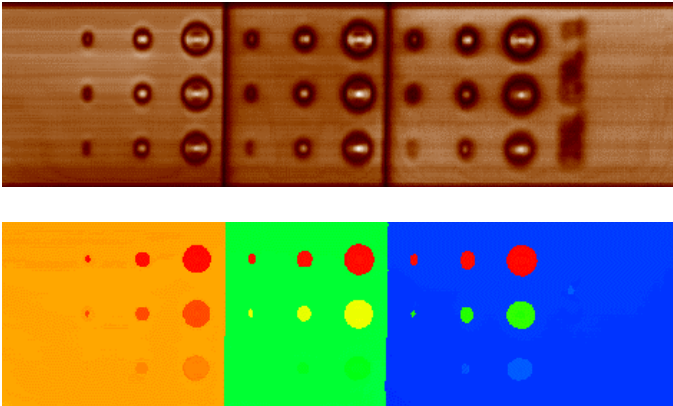
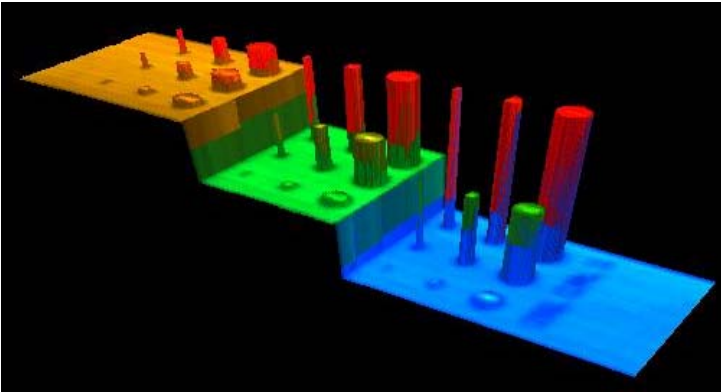


FlawInspecta's new 3D presentation of C-scan data

One of the major advantages of Diagnostic Sonar's **FlawInspecta** system is the ease in which it can be deployed. Although it is packed with state of the art imaging capabilities, such as Full Raw Data imaging, inexperienced operators can still collect volumetric data in a matter of minutes and present them as A, B and C-scans.

FlawInspecta is now also able to present this data as an interactive 3D display.

The following images are from Diagnostic Sonar's Calibration Block.

	<p style="text-align: center;">Calibration Block 1</p> <p>The photo shows the top surface of DSL Calibration Block 1.</p> <p>The translucent material allows the coarse and fine step wedges and the various flat-bottomed holes to be easily seen.</p>
	<p style="text-align: center;">C-scans</p> <p>These C-scans were obtained by scanning the array over the flat-bottomed hole region. The gate start was set to just after the interface and includes echoes over the whole depth.</p> <p>The upper C-scan shows the amplitude (AMP) within the gate and the lower shows the time-of-flight (TOF) or depth.</p>
	<p style="text-align: center;">3D Profile</p> <p>This volumetric representation shows exactly the same data but rendered as a 3D image.</p> <p>The user is able to use the mouse to alter the viewpoint interactively and any chosen view, such as that on the left, can be exported as an image for inclusion in reports.</p>

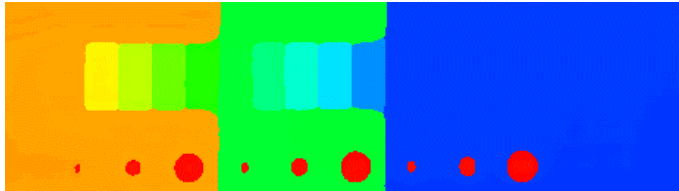
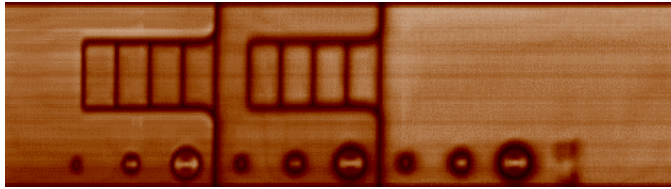
Diagnostic Sonar Ltd

Baird Road, Kirkton Campus, LIVINGSTON, EH54 7BX, UK

Tel: +44 (0)1506 411877. Fax: +44 (0)1506 412410.

Web: www.diagnosticsonar.com

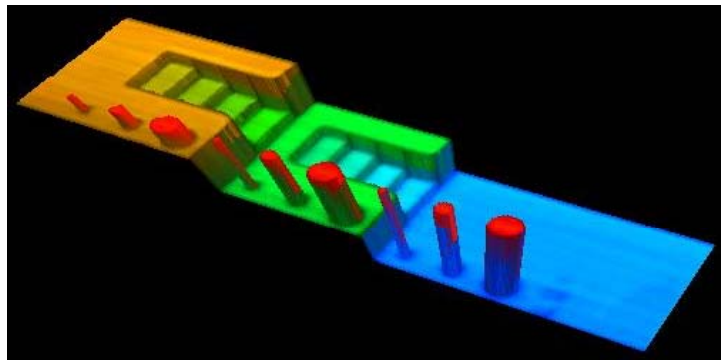
Email: sales@diagnosticsonar.com



C-scans

These C-scans were obtained by scanning the array over the adjacent region so covering both flat-bottomed hole and step wedge features. The gate start was set to just after the interface and includes echoes over the whole depth.

The upper C-scan shows the amplitude (AMP) within the gate and the lower shows the time-of-flight (TOF) or depth.

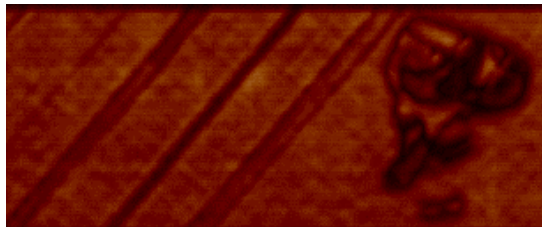


3D Profile

This volumetric representation shows exactly the same data but rendered as a 3D image.

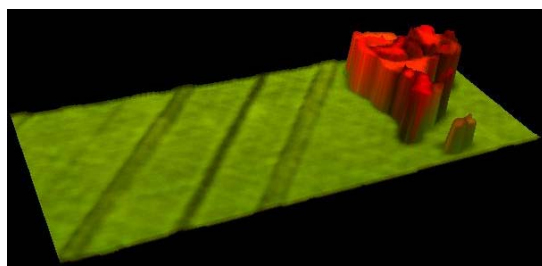
It is much easier to interpret the overall structure and to appreciate the relative locations of the individual features.

The following images are from a Carbon Fibre Composite panel with impact damage.



C-scans

These C-scans were obtained from a Carbon Fibre Composite panel with a BVID (Barely Visible Impact Damage) feature. The gate start was set to just after the interface and includes echoes over the whole depth. The upper C-scan shows the amplitude (AMP) within the gate and the lower shows the time-of-flight (TOF) or depth. The characteristic response from the BVID can be seen on the right. The diagonal stripes are strips of missing ply on the rear surface.



3D Profile

This volumetric representation shows exactly the same data but rendered as a 3D image. The interpretation is greatly enhanced by the combination of both AMP and TOF data into the 3D view.